

## Lime -Silica - Corundum Ternary System

**Crystalline Phases**

Cristobalite (Cr)	SiO <sub>2</sub>
Pseudowollastonite (Pw)	CaO-SiO <sub>2</sub>
Rankinite (Ra)	3CaO-2SiO <sub>2</sub>
Lime (L)	CaO
Corundum (C)	Al <sub>2</sub> O <sub>3</sub>
Mullite (Mu)	3Al <sub>2</sub> O <sub>3</sub> -2SiO <sub>2</sub>
Anorthite (An)	CaO-Al <sub>2</sub> O <sub>3</sub> -2SiO <sub>2</sub>
Gehlenite (Ge)	2CaO-Al <sub>2</sub> O <sub>3</sub> -SiO <sub>2</sub>

Plus an additional 7 phases consisting of mixtures of the three components which have no mineral name.

Brock University ©2002 G.C. Finn

---

---

---

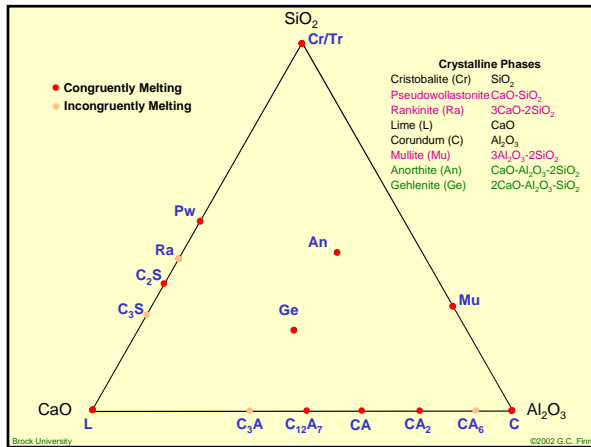
---

---

---

---

---




---

---

---

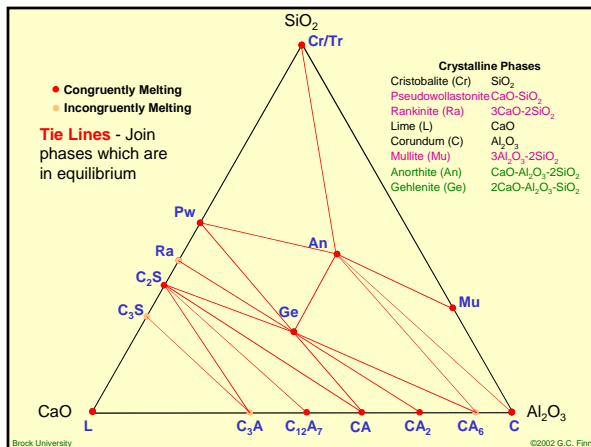
---

---

---

---

---




---

---

---

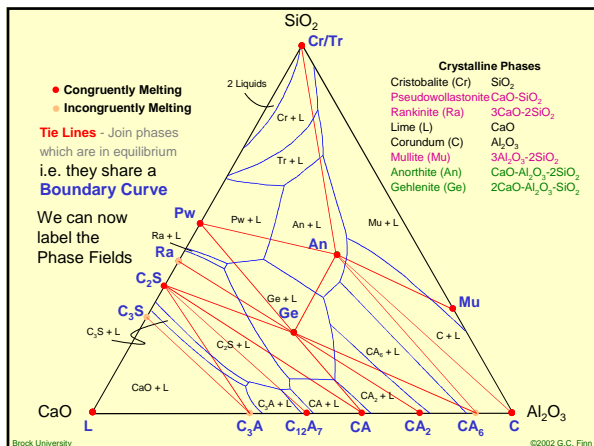
---

---

---

---

---




---

---

---

---

---

---

---

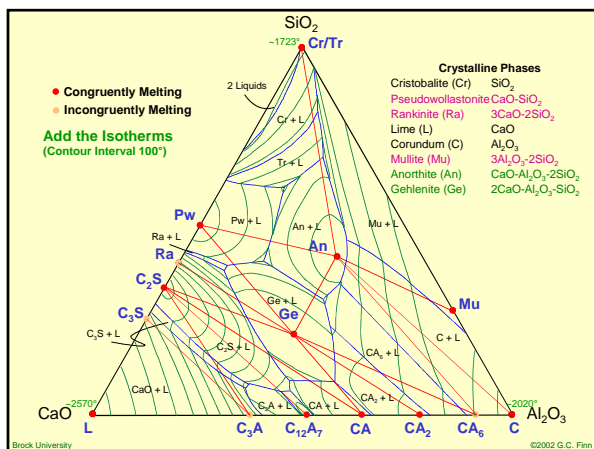
---

---

---

---

---




---

---

---

---

---

---

---

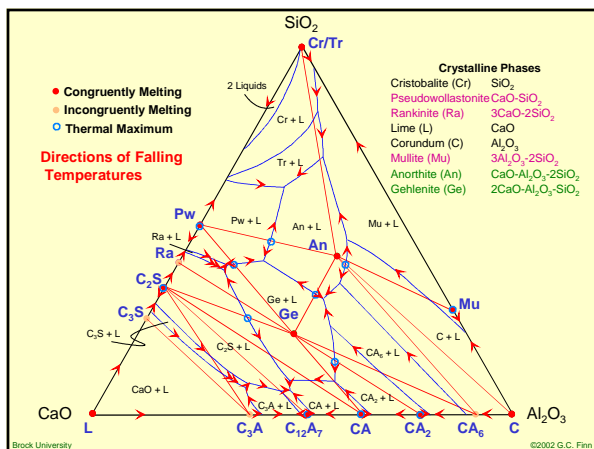
---

---

---

---

---




---

---

---

---

---

---

---

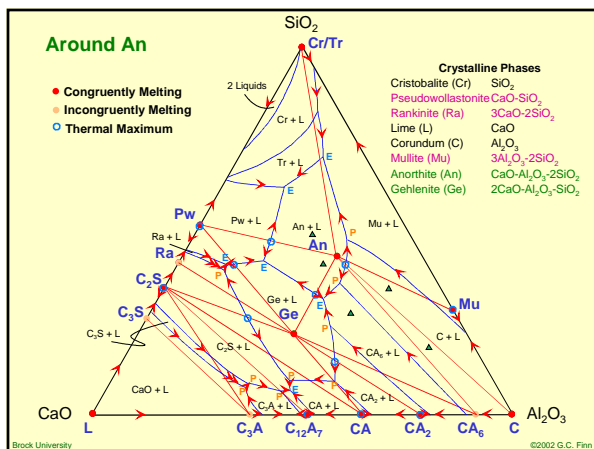
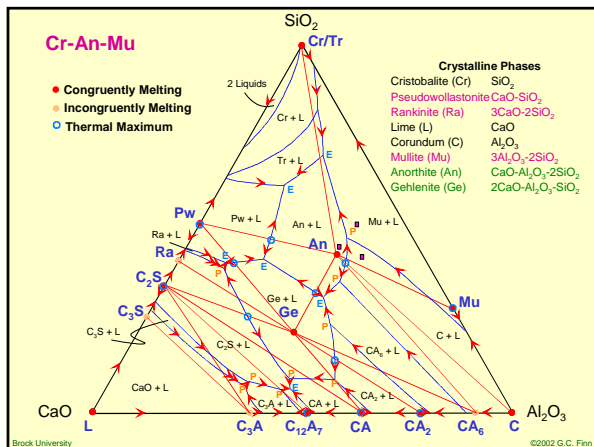
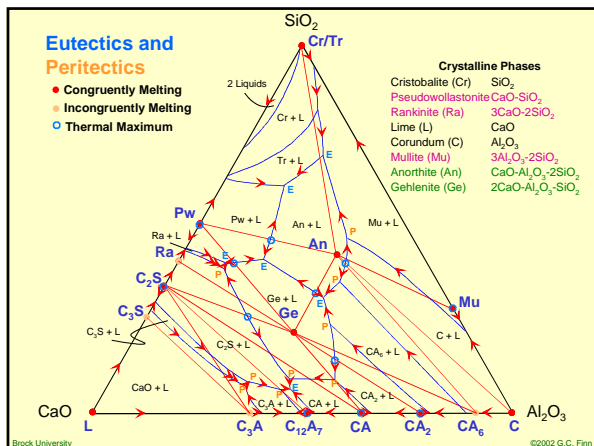
---

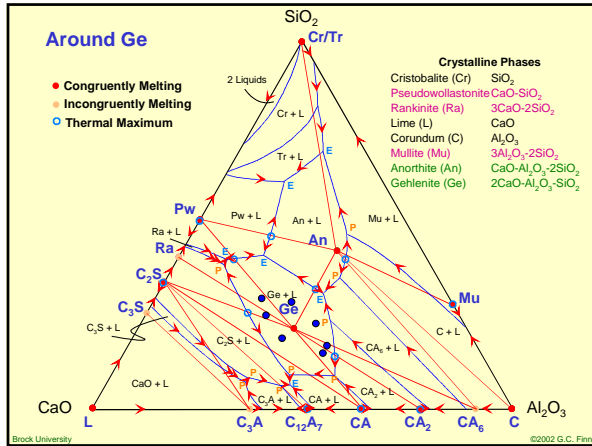
---

---

---

---






---



---



---



---



---



---